

# explore...

# welcome...

# relax...

# minyip victoria

## wimmera country

The Minyip township was established in the early 1870's and flourished as a service centre for this productive wheat growing district for over a century. Minyip was then "rediscovered" by Crawford Productions in 1984 as the town to be featured as "Coopers Crossing" in the long running television series "The Flying Doctors".

Production of the Flying Doctors ceased in 1989 but visitors from around the world still visit Minyip for a stroll down memory lane.

Take your time to find Minyip's Heritage Plaques located on buildings around town. The plaques detail the business, cultural, spiritual, health and education heritage of this vibrant rural community landscape.

The Minyip Show & Shine is held on the last Sunday in February. Follow the Show & Shine Facebook page for details.



Join us on the *Wimmera Mallee Tourism*,  
*Yarriambiack Tourism & Silo Art Trail* Facebook Pages

## information

*Yarriambiack – Home of the **Silo Art Trail***

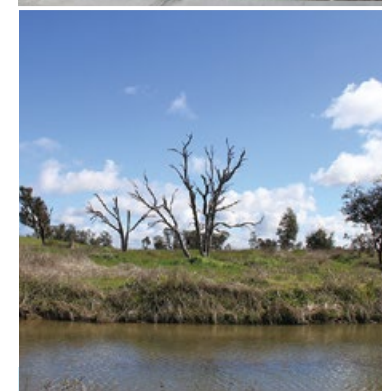
[minyip.com.au](http://minyip.com.au)

Population: approx. 450

Free Call 1800 065 647

[yarriambiack.vic.gov.au](http://yarriambiack.vic.gov.au)

[wimmeramalleetourism.com.au](http://wimmeramalleetourism.com.au)



[www.wimmeramalleetourism.com.au](http://www.wimmeramalleetourism.com.au)



# points of interest

- > **Bushland Reserve** contains a 700m and 2km walking track. The track also identifies a number of native plants and is a popular site for bird watching.
- > **Caravan park & Wetlands** is a five hectare site located on the edge of town and is complete with native trees and shrubs, construction of a number of picturesque walking tracks, complete with outdoor fitness equipment, playground, plus the provision of BBQ and picnic facilities, fire pit, a modern amenities block and powered camping sites. Pets welcome.
- > **Cemetery** is located to the east of town and reflects the strong German influence early in Minyip's establishment and holds great interest for those interested in genealogy and history.
- > **Farrer Monument**, believed to be the only monument of its kind in Australia to William Farrer, the 'Father of the Australian Wheat Industry'.
- > **Main Street** features many of the buildings such as the Royal Flying Doctor Service Base, Emma's Garage, Coopers Crossing Memorial Hall and the Club Hotel. All featured prominently in many episodes.
- > **Minyip/Rupanyup Community Bank** was the first enterprise of its kind in Australia. The profits are shared between the Bendigo Bank and Minyip and Rupanyup communities.
- > **Op Shop** located in the former Uniting Church and is a haven for bargain hunters. Open Wednesdays 1:30pm to 3:30pm, Fridays 1:30pm to 4pm, every 2nd Saturday 10am to 12pm.
- > **Saddlers Second Hand Goods & Craft Shop** is located in Main St and has a range of antiques and collectables for sale. **Plantz Art**, next to Saddlers, is home to an interesting artistic display created by plants.
- > **St Johns' Lutheran Church** was classified by the National Trust in 1974. The church features a striking octagonal belfry and houses a magnificent Fuller pipe organ.



key

- |   |  |   |
|---|--|---|
| 1. Bowling Club                                 | 8. Memorial Hall & Old Post Office                     | 16. Supermarket & Public Toilets        |
| 2. Club Hotel / Post Office / Chemist / Butcher | 9. Minyip Cemetery                                     | 17. Senior Citizens Centre              |
| 3. Community Bendigo Bank                       | 10. Minyip Field & Game                                | 18. Swimming Pool                       |
| 4. Emma's Cafe, Garage & Farrer Monument        | 11. Minyip Hotel                                       | 19. Walking Tracks                      |
| 5. Historical Society & Federation Square       | 12. Op Shop  | 20. Wetlands, Playground & Caravan Park |
| 6. Lions Park Playground                        | 13. Police Station                                     |   |
| 7. Medical Centre                               | 14. Saddlers Second Hand Goods & Crafts and Plantz Art |   |
|   | 15. St John's Lutheran Church                          |   |

