

# Victoria's Desert Oasis

## Hindmarsh Visitors Guide



Dimboola, Jeparit, Nhill, Rainbow and surrounds

**Everything to enjoy**

## WELCOME TO OUR REGION

Victoria's Outback covers an area of over 7,500 square kilometres. With such a large area, there is much to see and do and something on offer for everyone.

Nature enthusiasts can go four wheel driving then camp under our big sky with countless stars to watch over you. There are walking tracks, peaceful picnic areas to enjoy and tranquil fishing spots along the Wimmera River.

Water lovers can enjoy waterskiing, rowing or canoeing at Lake Hindmarsh and Horseshoe Bend, Dimboola. Trail bike riding is also a favourite pastime in the area.

Don't forget to pack your golf clubs and enjoy a relaxing, peaceful hit of golf. Each town has a golf course. Some are seasonal so check with the locals for when they are open. Perhaps a game of lawn bowls, a pleasant way to spend a Saturday afternoon.



If history is more your thing, take a step back in time at the Wimmera Mallee Pioneer Museum in Jeparit or Yurunga Homestead and Pella Church at Rainbow. Dimboola is home to a fabulous Print Museum and Court House Museum, and each town has a prolific Historical Society crammed with information and stories of yesteryear. Ebenezer Mission provides an interesting insight into the Aboriginal heritage of the region.

Victoria's Desert Oasis is the perfect spot for photographers and painters alike, with perfect sunsets and scenic views of wildflowers, flora and fauna.

There are many places of interest and things to do or just stop, relax and enjoy. You will be amazed at all there is on offer.

## NATURE

Nature, outdoors and wide open spaces are our flagship. Nestled amongst the Little and Big Desert National Parks, our region has plenty to offer nature lovers.

Four wheel driving awaits along many tracks through the Little and Big Desert, and Wyperfeld National Park, along the Netting Fence, Herman's Hill, and around Lake Hindmarsh and Lake Albacutya.



If you prefer a walking pace, explore the Nine Creeks Reserve at Dimboola which incorporates a walking and bicycle track and boardwalk across the Wimmera River.

Wail State Forest offers the opportunity to explore native bushland, situated between Horsham and Dimboola. Snape Reserve is a Trust for Nature property that is open for inspection by appointment and Glenlee Nature Reserve also provides a tranquil natural setting.

If you are travelling along the Western Highway, take some time to stop at the Pink Lake, a few kilometres west of Dimboola. The lake is easily viewed from a rest stop beside the Western Highway or you can walk down a path to the edge of the lake. The region boasts many natural swamps and dams, home to many species of bird and wild life.

Along the way, there are plenty of quiet picnic and camping areas to rest at and enjoy. Wimmera River at Horseshoe Bend and Picnic Bend in Dimboola and Lake Hindmarsh near Jeparit and Lake Albacutya near Rainbow are just a few of many.

Nhill boasts a secluded and tranquil board walk through the swamp and Nhill Lake, with bird watching plentiful.

## DIMBOOLA

Dimboola, the gateway to the Little Desert is situated on the picturesque Wimmera River and was previously known as 'Nine Creeks'. The area was traditionally called 'Watchegatcheca' by the local Aboriginal People which means 'wattle tree and white cockatoos'.

Boating fanatics can access the tranquil Wimmera River from one of several public boat ramps to enjoy the scenic locations of Horseshoe Bend and Picnic Bend.

The landscape features in Sidney Nolan's famous paintings, who was stationed in the area during World War II. It was also inspirational for Jack Hibberd, providing the setting for his renowned play, *Dimboola*.

### DIMBOOLA



Dimboola Courthouse



Lake Hindmarsh

Pink Lake

## JEPARIT

Jeparit's great claim to fame is that it is the birthplace of Sir Robert Menzies, Australia's longest serving Prime Minister.

Explorer Edward Eyre camped at nearby Lake Hindmarsh in 1838 while searching for an overland route from Melbourne to Adelaide.

Here the Wimmera River meets the largest freshwater lake in Victoria, Lake Hindmarsh, with 13kms of walking track meandering along the banks of the Wimmera River and looping around town.

Jeparit offers camping, boating, birdwatching, lazing on a sandy beach at Lake Hindmarsh, fishing and yabbying or exploring settlement history at the fabulous Wimmera Mallee

### JEPARIT



## LEGEND

Accommodation	Bicycle Track	CFA	Information Centre	Police
Ambulance	Boat Ramp	Church	Parking	Post Office
ATM	Camping	Dining	Petrol	Swimming Pool
Bank	Caravan Dump Point	Disabled Facilities	Pharmacy	Toilets
BBQ	Caravan Park	Golf Course	Picnic Tables	Walking Tracks
	Cemetery	Hospital	Playground	

## NHILL

Midway between Melbourne and Adelaide, Nhill is a thriving country town offering a picturesque place to stop, explore and recharge. Surrounded by the Little and Big Desert National Parks, the commercial centre of Nhill has attractive parks and gardens within the median strip. Nhill is home to a large war memorial, a bronze draught horse monument, a band rotunda, visitor information centre, playgrounds, shelters, and luscious lawns. View local artwork at the Gallery Central in the heart of Nhill's township.

A large grain silo, part of Noske Flour Mills is also part of the historic town walk. Access to the Nhill Lake is via the boardwalk from Jaypex Park across the swamplands. The town was first surveyed in 1879 and some of the historic buildings from the 1880s, including the Post Office, are still features of the town.

### NHILL



Noske's  
Flour Mill

Rainbow Post Office

Nhill Railway

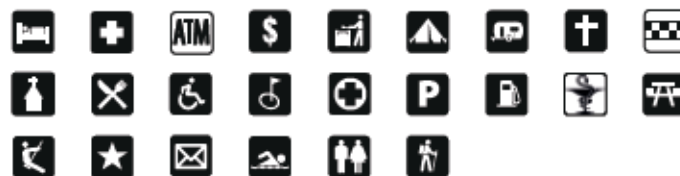
## RAINBOW

An oasis in the middle of vast agriculture and wilderness areas; areas that can be harsh but also productive and rich and where majestic wedge-tailed eagles regularly nest in giant red-gum trees and soar on rising thermals of hot air.

Unique gardens, a vibrant main-street and spectacular hand-painted murals provide visitors with a surprise and immediate understanding on what makes this place tick.

Pella Church, Yurunga Homestead and Rainbow Archive have local historic significance while the Amy Johnson Highway, Lake Hindmarsh, Lake Albacutya, Outlet Creek, Wyperfeld National Park and the Birdcage Reserve all offer recreational pursuits such as bird watching, bush walking and flora and

### RAINBOW





# HISTORICAL



- 1 Ebenezer Mission** was established by Moravian missionaries in 1859. It was created to 'civilise' the Aboriginal people of the area and convert them to Christianity. Situated at Antwerp between Dimboola and Jeparit.



- 2 Dimboola Old Court House**, built in 1875 is home to the Dimboola Historical Society, including a collection of photographs, newspapers, and other interesting memorabilia.



- 3 Dimboola Print Museum** *The Dimboola Banner*, dates back to 1879. The original printing presses as well as a variety of printing presses acquired from throughout Australia are the major attraction of the museum.



- 4 Steam Train at Apex Park** **Dimboola** was purchased to celebrate the central role of the railway in the development of Dimboola. The J539 was an oil-burning locomotive, built in Lancashire, England in 1954.



- 5 Dimboola Railway Station** built in 1883 was integral to the establishment of the town and is now a major change-over point for the train crews.



- 6 Dimboola Memorial Secondary College** is unique as it was originally erected as a memorial to those who fought in World War I. Located in a

picturesque setting on top of a hill overlooking Dimboola and the Little Desert.



- 7 The Nolan Studio, Dimboola** is dedicated to the work of Australian expressionist painter Sidney Nolan (1917—1992) who was stationed in Dimboola while on

army duty during World War II.



- 8 John Shaw Neilson Cottage, Nhill** contains two of the original rooms of the home where poet John Shaw Neilson was born. It was located from Penola and reconstructed at Jaypex Park, Nhill.



- 9 The Talking Draught Horse** monument in Goldsworthy Park, Nhill is a reminder of the major part the draught horse played in the development of Australia and our region.



- 10 Mallee Fowl Memorial** is located at the front of the Council offices in Nhill. The Mallee Fowl is a unique bird which builds large earth mounds to incubate its eggs.



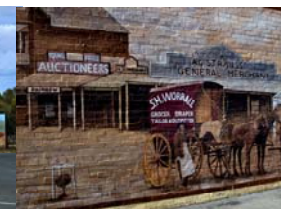
- 11 Wimmera Mallee Pioneer Museum**, Jeparit has Australia's largest range of agricultural machinery from the 1890s to 1940. Take a step back in time and see a tribute to the early settlers in the Wimmera and Mallee.



- 12 Sir Robert Menzies Memorial** was erected to commemorate his birth in Jeparit in 1894. Sir Menzies was the longest serving Australian Prime



- 13 Yurunga Homestead, Rainbow** is an Edwardian style home made of brick and limestone. Built in 1909 for Mr A.G. Cust, Yurunga now displays furniture, antiques and historical displays and is regularly open to the public.



- 14 Town murals** located in and around Federal Street Rainbow as well as inside a few local buildings acknowledge the heritage of the early pioneers and the history of the area.

## CEMETERY ROUTE

The cemeteries of Hindmarsh are full of history and intrigue. Listed below are some of the cemeteries in the local area:

Albacutya  
Antwerp  
Bleak House (Boyeo)  
Dahwedarre (North Yanac)  
Dimboola  
Jeparit  
Katyil Pioneer  
Katyil Public  
Kenmare

Kiata  
Lochiel  
Lorquon  
Netherby  
Nhill  
Rainbow  
Winiam  
Woorak

For more information on Cemetery Trusts within the Hindmarsh Shire, call (03) 5391 4444  
[www.hindmarsh.vic.gov.au](http://www.hindmarsh.vic.gov.au)

## DESERT TOURING ROUTE

Whether you're into the thrill of four-wheel driving or bushwalking amongst the natural wonderland, there is tracks to inspire and entertain you.

Plan your trip safely. Visit [www.hindmarsh.vic.gov.au](http://www.hindmarsh.vic.gov.au) and [www.parkweb.vic.gov.au](http://www.parkweb.vic.gov.au) for more information. Please note that all vehicles and motor bikes must stay on designated tracks and with appropriate registrations and licences.

### Four-Wheel Driving

The Little and Big Deserts and Wyperfeld National Park are focal points for 4WD enthusiasts, who travel far and wide to tackle the sandy dunes of the northwest. With plenty of camping grounds and facilities throughout both National Parks and surrounding areas, your day trips or overnight stays will be ones to remember. Please see over for 4WD tracks throughout the region.

### Bush Walking



From 30 minutes to 3-day treks, there is a walking track to suit everyone. Witness first hand the abundant bird and plant life Hindmarsh has to offer.

The Little and Big Deserts, and Wyperfeld NP all offer fantastic walking tracks, and both Lake Hindmarsh and Albacutya are worth spending an afternoon exploring. Nine Creeks Reserve is a picturesque spot right in the heart of Dimboola, incorporating walking and bicycle tracks. The Little Desert Nature Lodge offers an insight into the flora and fauna of the Desert, right on Nhill's doorstep.

## ABORIGINAL HERITAGE ROUTE

The Hindmarsh Tourism Association would like to acknowledge the traditional land owners.

**Wimmera River, Gariwerd (Grampians), Wimmera and Mallee** is part of the creation dreaming story which was formed by two large ancestral beings -Purra the giant Kangaroo and Tchingal the giant Emu. The river starts in Gariwerd (Grampians) and makes its way back through the Wimmera and continues up into the Mallee. The Wimmera River also connects into two major lakes, Lake Hindmarsh and Lake Albacutya.

**Horseshoe Bend, Dimboola** is a significant place for Aboriginal people in Dimboola, where the consent determination for Native Title was granted. In December 2005, the Federal Court recognised the Wotjobaluk, Jaadwa, Jadawadjali, Wergaia and Jupagalk peoples non-exclusive native title rights over a part of their original claim area. The native title rights are the right to hunt, fish, gather and camp for personal, domestic and non-commercial purposes, under Aboriginal traditional laws and customs.

**Ebenezer Mission, Antwerp** was established in 1859 on what was gazetted as the Lake Hindmarsh Aboriginal Reserve on Wotjobaluk country along the Wimmera River. In 1861 Ebenezer was reported as having a permanent population of 22 Aboriginal people attending the school and church services and a further 140 coming on site when rations were distributed. Eventually conditions were placed on the rations provided, which led to the development of a large permanent Aboriginal community at Ebenezer. In 1904 Ebenezer was closed and the land handed back to the Lands Department.

A **Canoe Tree** is located at Jaypex Park, Nhill.

There is evidence of aboriginal use of the rivers along the banks of many Australian rivers including burial sites, scarred trees whose bark was used to make canoes, and campsites.

The **Corroboree Ground** at Nhill is a traditional location where groups would meet and perform ceremonies, consisting of traditional songs, dances, weddings, trading and celebrations.

## GOLF TOURING ROUTE

### Nhill Golf Club

Situated halfway between Melbourne and Adelaide, The Nhill Golf Club has become known as the Wimmera's best kept secret. Open all year round, the large manicured greens complement the flat-to-slightly undulating tree-lined fairways, with beautifully shaped and positioned bunkers. The course is watered all year keeping it in excellent condition. Due to the abundance of bore and recycled water, it does not suffer from drought conditions.

Autumn Tournament—Labour Day Weekend March  
Club Tournament—Queen's Birthday Weekend June  
Spring Tournament—Second weekend in October

### Local Seasonal Sand Scrape Courses

#### Open April—October

**Baker** Baker Road Baker, Par 70, 5337m

Tournament: Second weekend in August

**Dimboola** Riverside Dimboola, Par 71, 5878m

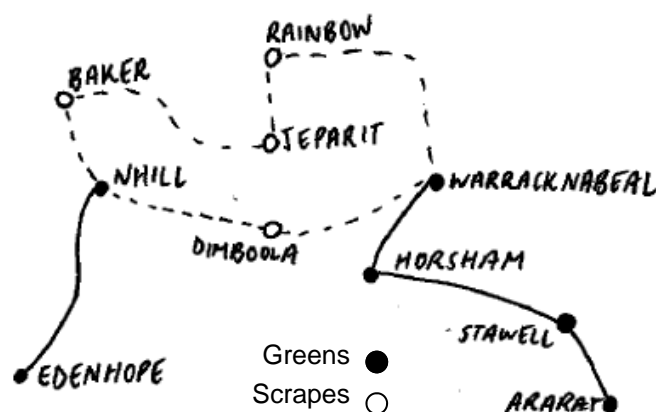
Tournament: Late July

**Jeparit** Nhill Road Jeparit, Par 65, 4384m

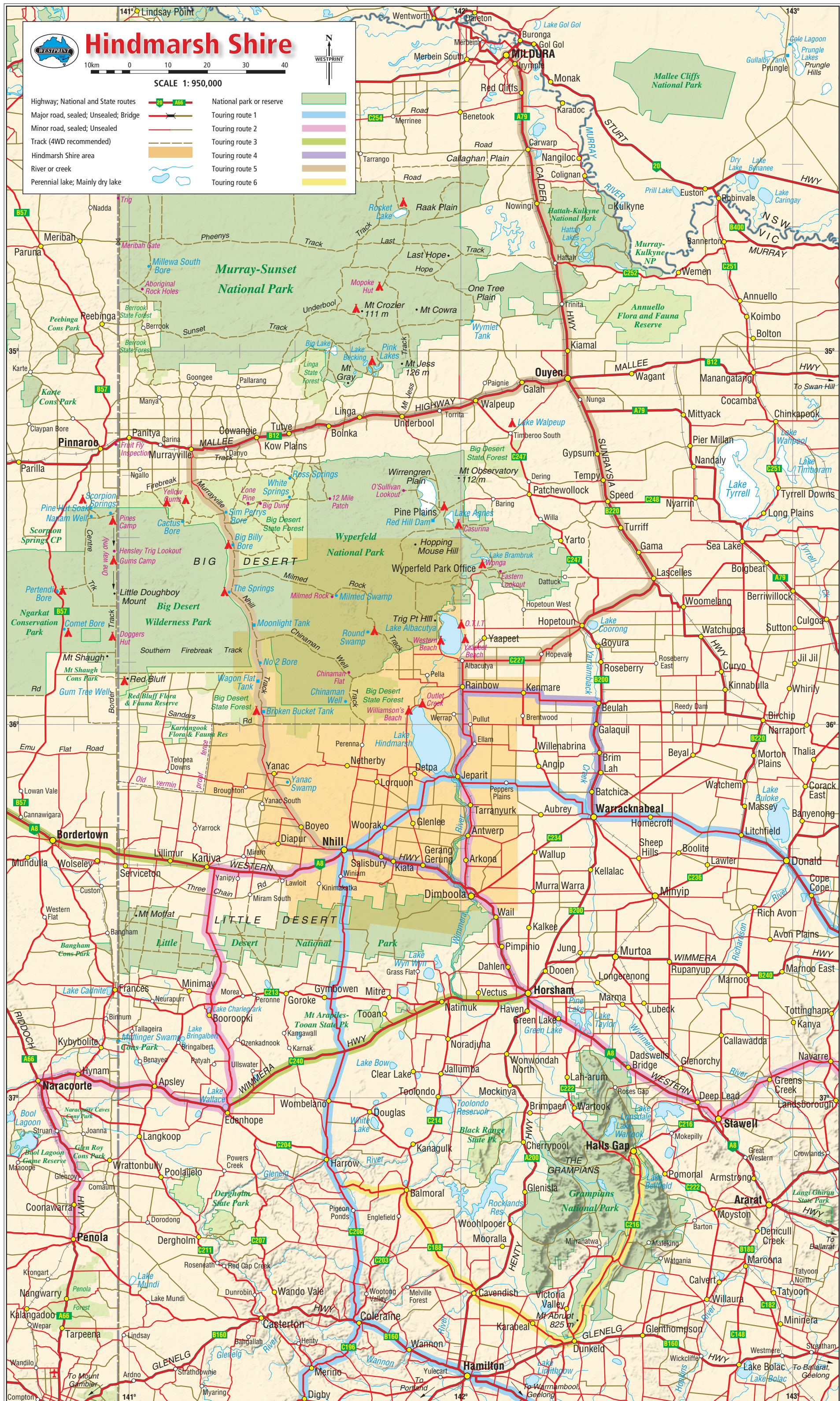
Tournament: Late July/Early August

**Rainbow** Nhill Road Rainbow, Par 71, 5864m

### Why not plan a golfing holiday?









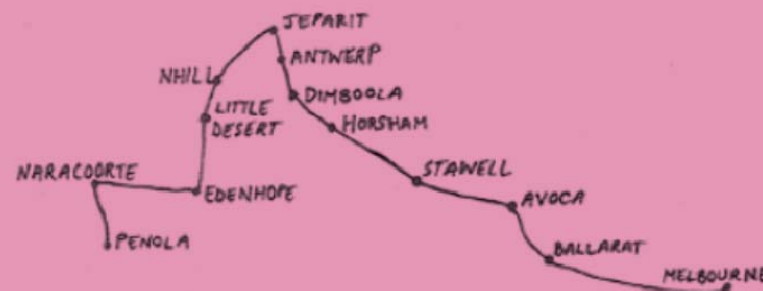
652	425	335	355	455	730	601	398	430	577	522	392	635	614	528	Adelaide
143	199	241	169	224	202	89	170	97	104	47	130	175	90		Ararat
174	292	333	267	311	112	68	262	187	174	137	223	120			Ballarat
292	277	373	288	417	152	86	247	214	282	196	244				Bendigo
265	69	200	38	251	337	209	37	32	167	108					Dimboola
165	175	218	146	233	249	134	145	71	101						Halls Gap
98	234	167	195	132	286	196	203	130							Hamilton
228	104	147	75	267	299	174	73								Horsham
302	32	205	45	288	375	216									Jeparit
238	266	320	251	331	169										Maryborough
267	406	446	375	425											Melbourne
185	319	103	220												Mt Gambier
292	77	163													Nhill
270	237														Naracoorte
336															Rainbow
															Warrnambool

Distances between major towns  
Approximate distances shown in the table at left are in kilometres between towns using the most direct route along main roads.  
Touring route maps  
The sketch maps below are to be used as a guide only and are not to scale.



### PORTLAND / WARRNAMBOOL TO MELBOURNE VIA HINDMARSH

Maritime Discovery Centre  
Whale Watching  
Car Museum  
Watersports  
Bushwalking  
Hotels  
Wineries  
Four Wheel Driving



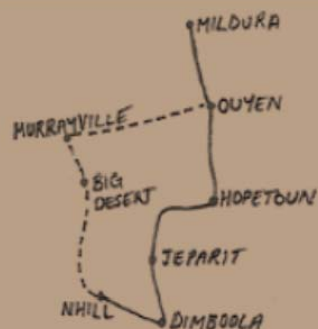
### PENOLA / NARACOORTE TO MELBOURNE VIA HINDMARSH

Wineries  
Art Gallery  
Historic Sights  
Walking Tour  
Caves  
Wetlands  
Local Produce  
Historical Museum  
Bed & Breakfasts  
Watersports  
Hotels  
Four Wheel Driving



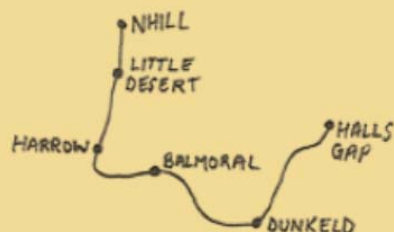
### PENOLA / NARACOORTE TO ADELAIDE VIA HINDMARSH

Wineries  
Art Gallery  
Historic Sights  
Walking Tour  
Caves  
Wetlands  
Local Produce  
Historical Museum  
Bed & Breakfasts  
Watersports  
Hotels  
Four Wheel Driving



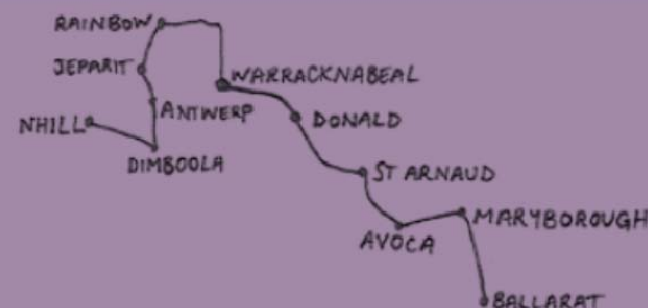
### MILDURA TO HINDMARSH VIA (a) BIG DESERT NATIONAL PARK AND MURRAYVILLE TRACK and (b) VIA OUYEN AND HOPETOUN

Four Wheel Driving  
Bird Watching  
Trail Bike Riding  
Watersports  
Camping  
Historical & Genealogy Centre  
Shopping  
Cafes and Hotels



### GRAMPIANS TO HINDMARSH VIA LITTLE DESERT NATIONAL PARK

Wildlife Parks  
Local produce  
Wineries  
Rockclimbing  
Four Wheel Driving  
Bush Walking  
Cafes and hotels



### TOURING FROM BALLARAT TO HINDMARSH VIA MARYBOROUGH, AVOCA, ST ARNAUD, DONALD, WARRACKNABEAL

Wineries  
Art Galleries  
Mountain Biking  
Food and Wine  
National Park  
Historical Museums  
Watersports  
Cafes and Hotels

## BIG DESERT TOURING ROUTE



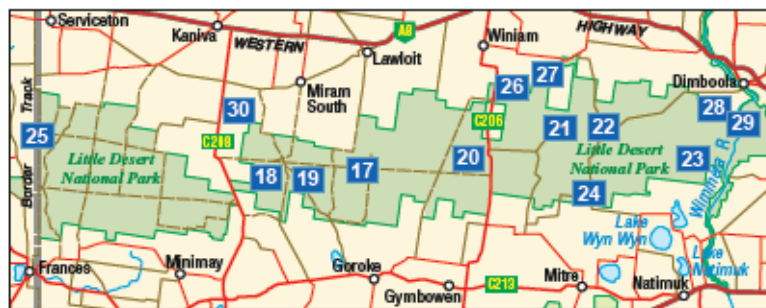
### Big Desert/Wyperfeld Four Wheel Drive Tracks

- 1 Nhill–Yanac–Murrayville Track, Wyperfeld NP
- 2 State Forest West of Nhill–Murrayville Track. 57km/3hrs
- 3 State Forest East of Nhill–Murrayville Track. 100km/5hrs
- 4 State Forest East of Nhill–Murrayville Track. 45km/2.5hrs
- 5 Ngarkat Conservation Park and SA Border. 190km/9hrs
- 6 Wyperfeld NP east of Nhill–Murrayville Track. 175km/7hrs
- 7 Wyperfeld NP East of Nhill–Murrayville Track extension to Route 6 going on to Rainbow past lake Hindmarsh

### Big Desert/Wyperfeld Bush Walking Tracks

- 8 Discovery Walk 4km 2hrs return
- 9 Tyakil 4.4km 2hrs return
- 10 Desert Walk 6km 2.5hrs return
- 11 Discovery Walk Loop 8km 3.5hrs return
- 12 Nine Mile Square Track 4km 2hrs return
- 13 Eastern Lookout via Lignum Track 10km 4hrs return
- 14 Black Flat 12km 4.5hrs return
- 15 Everard Track 13.5km 5.5hrs return
- 16 Overnight Walk 40km 2 days return

## LITTLE DESERT TOURING ROUTE



### Little Desert Four Wheel Drive Tracks

- 17 McDonald Highway
- 18 Broughton's Waterhole
- 19 Wild Dog Spring
- 20 Red Gum Swamp
- 21 Dahlenburg Mill
- 22 Salt Lake Track
- 23 Eagle Swamp
- 24 Lear's Well
- 25 Border Track

### Little Desert Bush Walking Tours

- 26 Stringybark Walk, Little Desert 30min to 1 hour
- 27 Sanctuary-Keith Hateley Nature Walk, Little Desert 30min
- 28 Pomponderoo Hill Nature Walk, Little Desert 30min
- 29 Horseshoe Bend/Ackle Bend Campgrounds
- 30 Yanipy Walk, Little Desert

## Parks Victoria

Visitors should be aware of and prepare themselves and their vehicles of all hazards in Victoria's parks.

Research your trip to ensure that you have the adequate information to enjoy your trip safely.

Some parks may be closed due to weather conditions. Check [www.bom.gov.au](http://www.bom.gov.au) before you leave and throughout your trip.

Victoria's climate is harsh; make sure you survive by being sun smart and always carrying drinking water with you. Always make sure you let someone know the details of your trip.

If you are travelling and enjoying the many water spots around Hindmarsh Shire Council. Make sure you are safe and have all the relevant boat and fishing licenses.

Please be aware there may be minimal or no mobile phone range in some areas. For more tips go to [www.parkweb.vic.gov.au](http://www.parkweb.vic.gov.au)



## CONTACT NUMBERS

**POLICE**

**FIRE**

**AMBULANCE**

**000**

### **HOSPITALS**

Dimboola 5363 7100

Jeparit 5396 5500

Nhill 5391 4222

Rainbow 5396 3300

### **POLICE**

Dimboola 5389 1470

Jeparit 5397 2071

Nhill 5391 1022

Rainbow 5395 1051

**VICTORIAN SES** 13 25 00  
(State Emergency Service)

### **FIRE DANGER INFORMATION**

Fire Restrictions can be applied across Victoria by CFA, when fire danger is high.

Typically this is over the period of November through to April. Hindmarsh Shire Council falls within the 'WIMMERA' Fire Ban District.

A Total Fire Ban is declared for the district by CFA on days when fires are likely to spread rapidly and could be difficult to control. A Total Fire Ban declaration means no fires can be lit for the declared district for that day.

For more information on Fire Danger and  
Total Fire Bans go to  
[www.cfa.vic.gov.au](http://www.cfa.vic.gov.au)